

ФОРМИРОВАНИЕ ФУНКЦИОНАЛЬНОЙ ГРАМОТНОСТИ НА УРОКАХ АНГЛИЙСКОГО ЯЗЫКА ЧЕРЕЗ ОРГАНИЗАЦИЮ РАБОТЫ С НЕСПЛОШНЫМ ТЕКСТОМ

**Гребенникова Анна Валентиновна
учитель английского языка
ЧОУ «Гимназия №1»,**

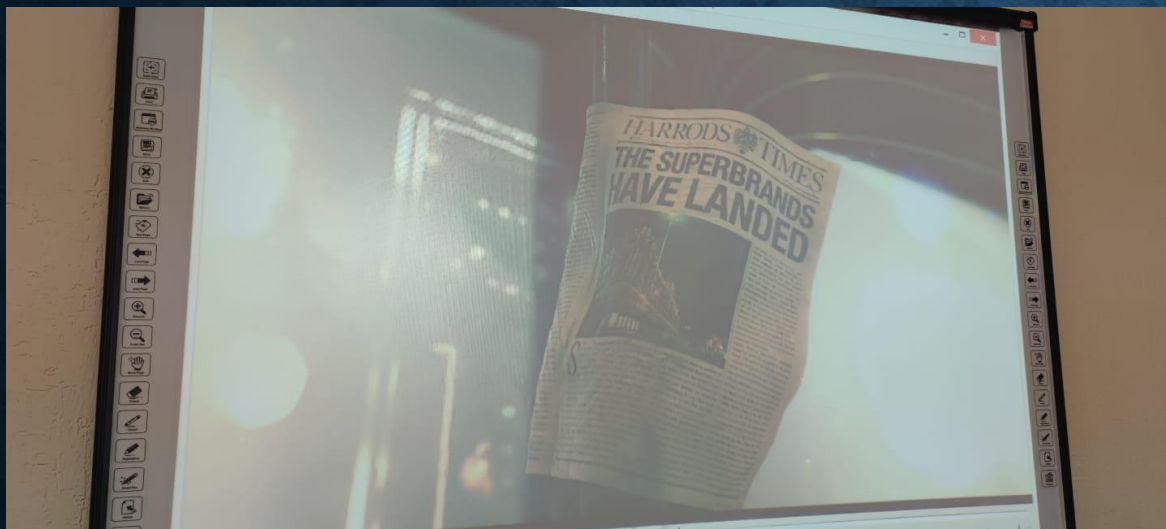
ФУНКЦИОНАЛЬНАЯ ГРАМОТНОСТЬ –
СПОСОБНОСТЬ ЧЕЛОВЕКА ВСТУПАТЬ В
ОТНОШЕНИЯ С ВНЕШНЕЙ СРЕДОЙ И
МАКСИМАЛЬНО БЫСТРО АДАПТИРОВАТЬСЯ
И ФУНКЦИОНИРОВАТЬ В НЕЙ.



**ЦЕЛЬ УРОКА: РАЗВИВАТЬ НАВЫКИ
СВОБОДНОГО ОБЩЕНИЯ И
ПРАКТИЧЕСКОГО ПРИМЕНЕНИЯ
ЛЕКСИКИ, ИСПОЛЬЗУЯ НЕСПЛОШНОЙ
ТЕКСТ**



ПОГРУЖЕНИЕ В ЯЗЫКОВУЮ СРЕДУ



ЛЕКСИЧЕСКИЙ КЕЙС

Complete the sentences.

You can buy magazines at the _____.

You can buy a bunch of roses at the _____.

You can buy a pair of trainers at the _____.

You can cut your hair at the _____.

You can send a letter at the _____.

You can buy some fresh fish at the _____.

newsagent's

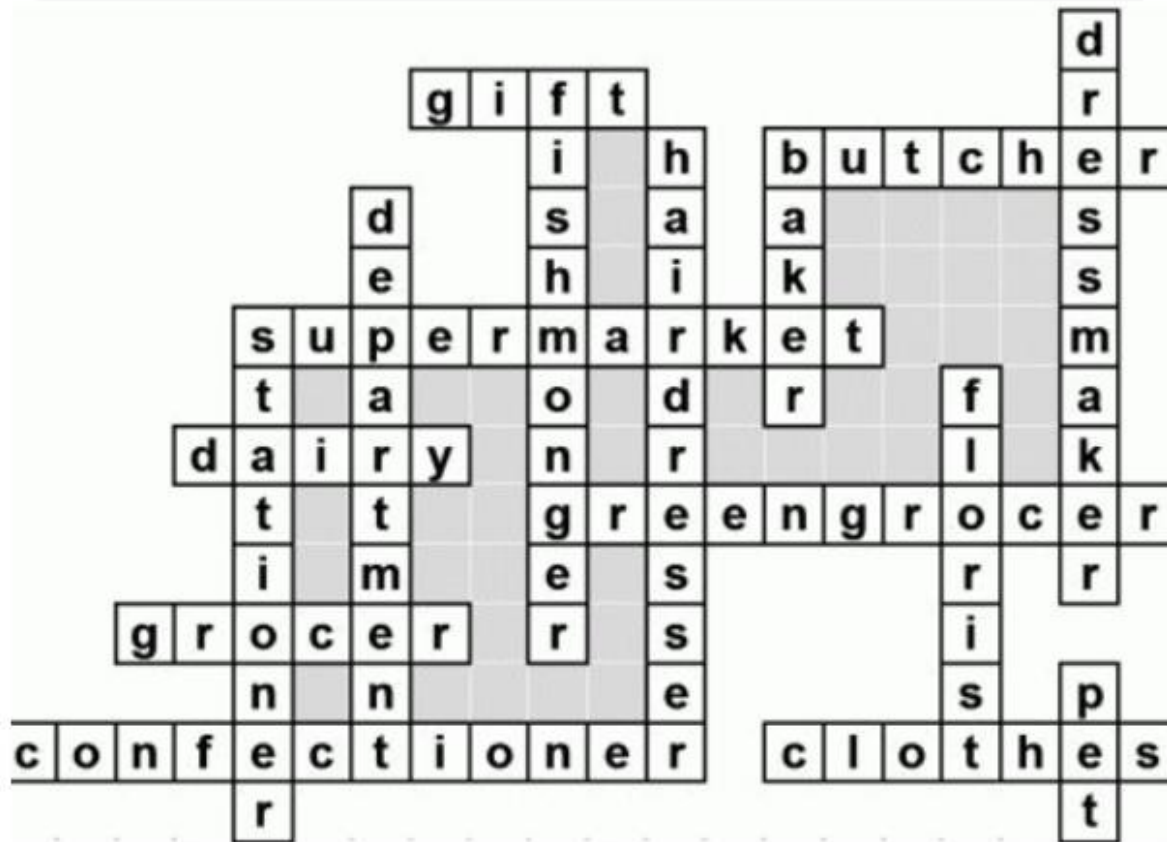
florist's

shoe shop

hair dresser's

post office

fishmonger's



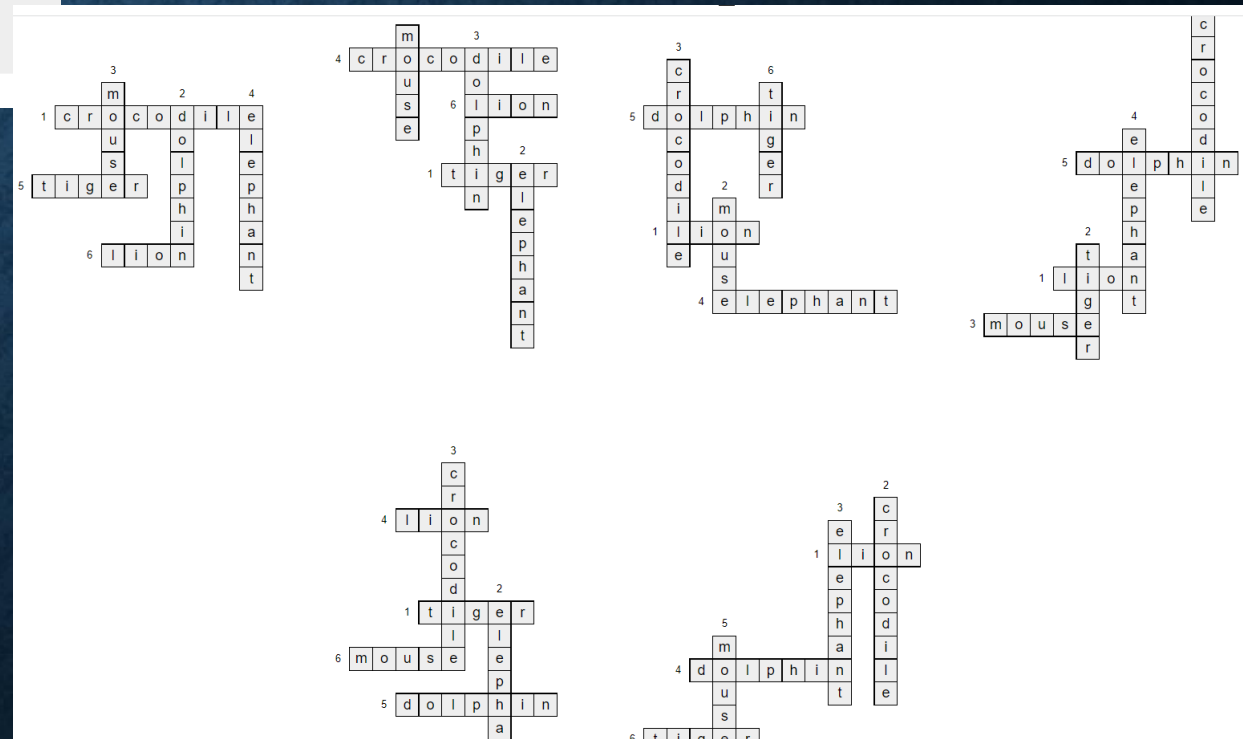
Создать кроссворд

Введите через запятую или пробел не больше 20 слов, из которых нужно составить кроссворд.

dolphin, crocodile, mouse, elephant, lion, tiger

Создать

<https://biouroki.ru/workshop/crossgen.html>



ПОСТАНОВКА ЦЕЛИ И ЗАДАЧ УРОКА

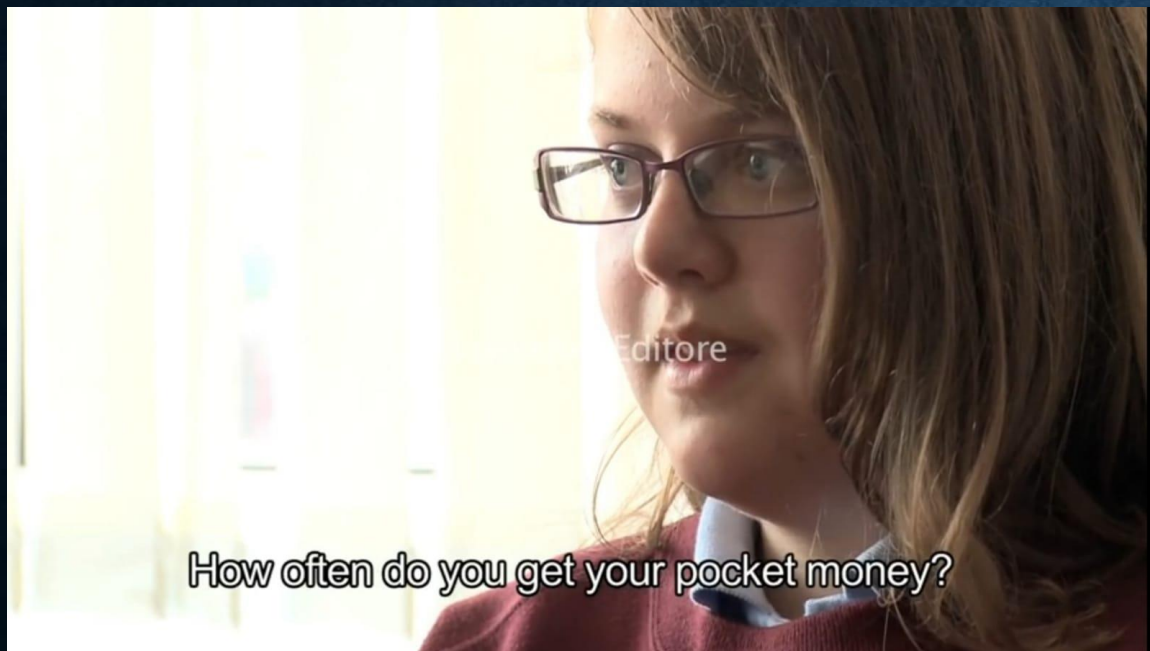




When I get pocket money I usually go out on clothes and like music and stuff like that.



What do you spend your pocket money on?

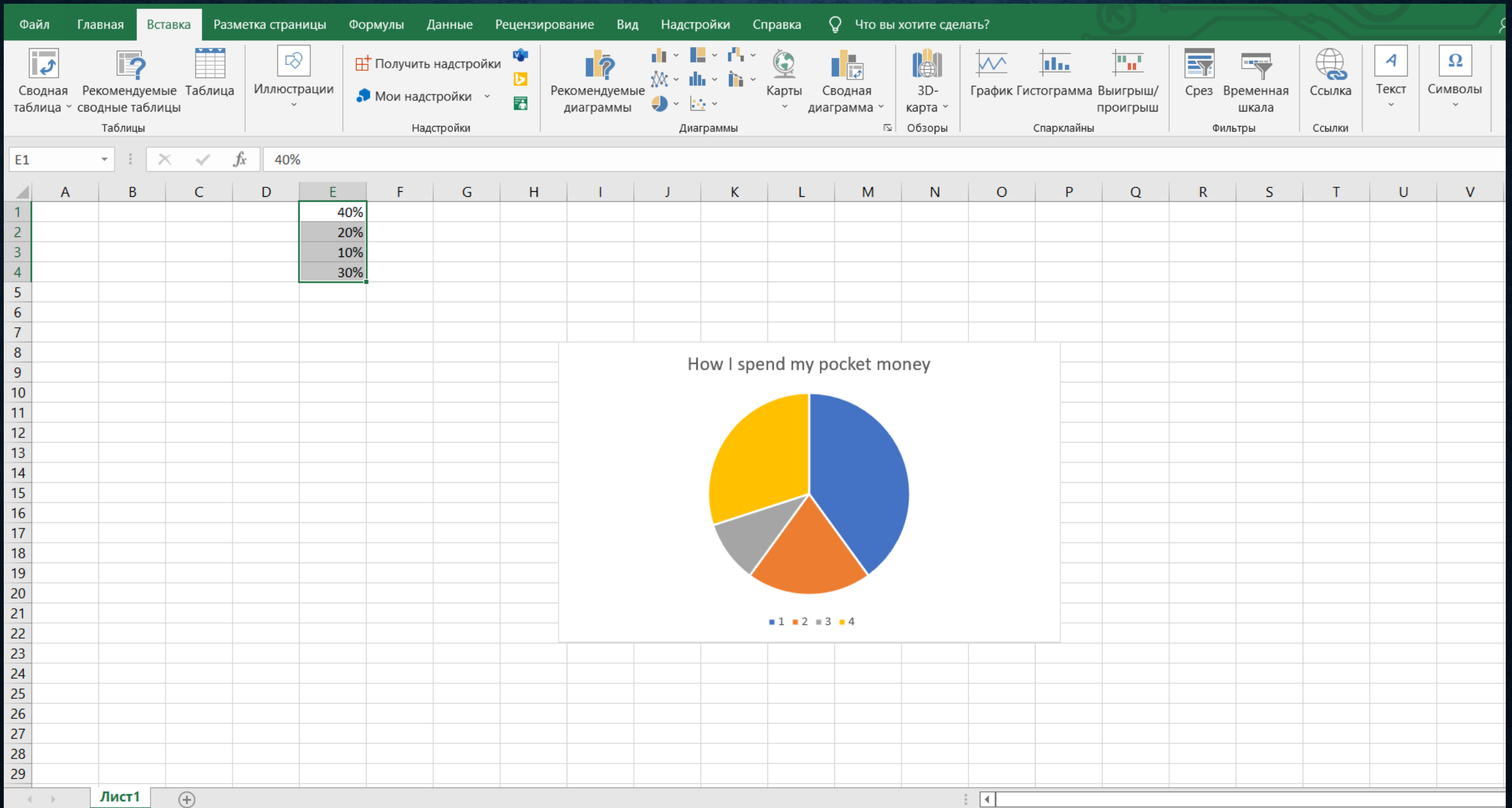


How often do you get your pocket money?

How I spend my pocket money

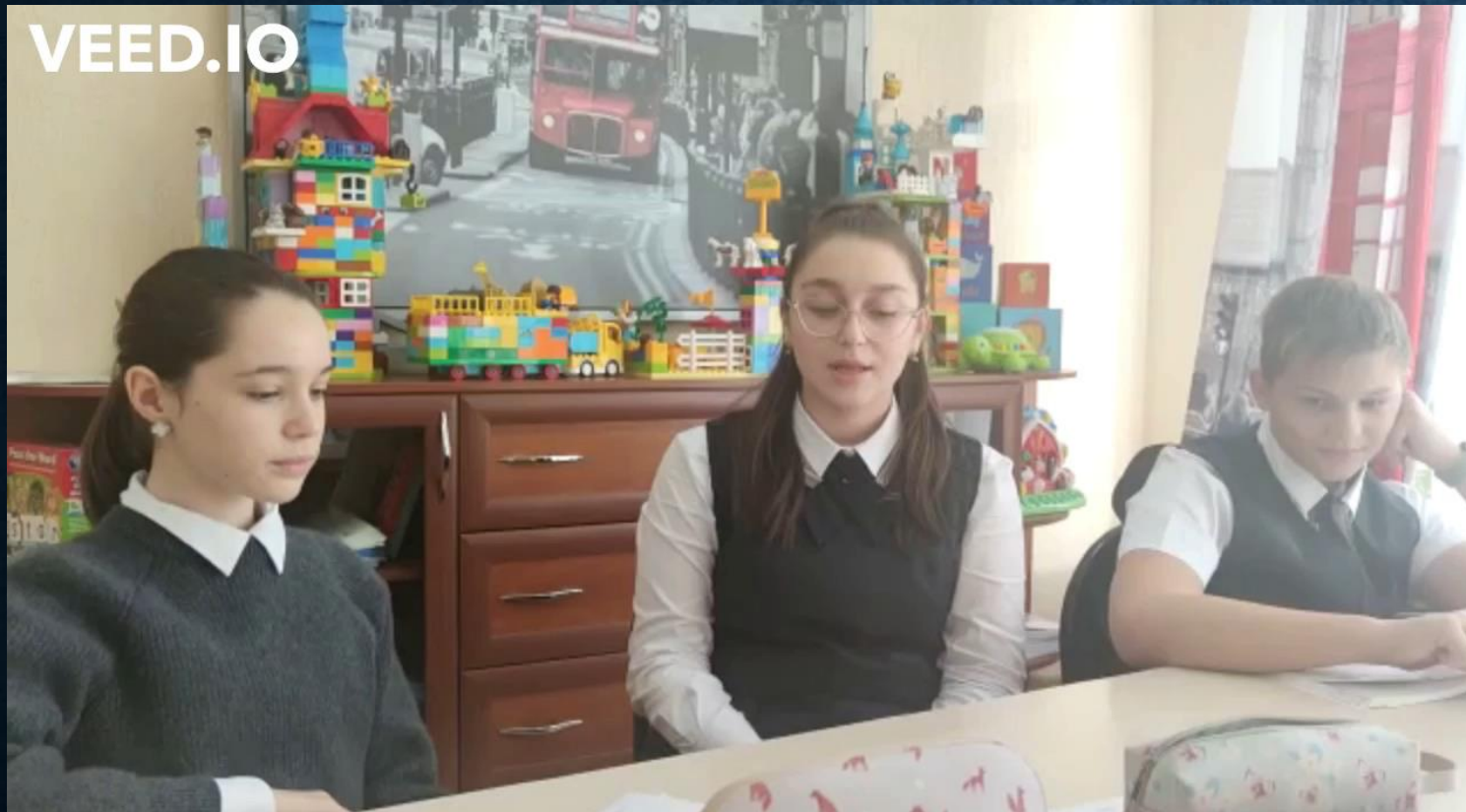


■ 1 ■ 2 ■ 3 ■ 4

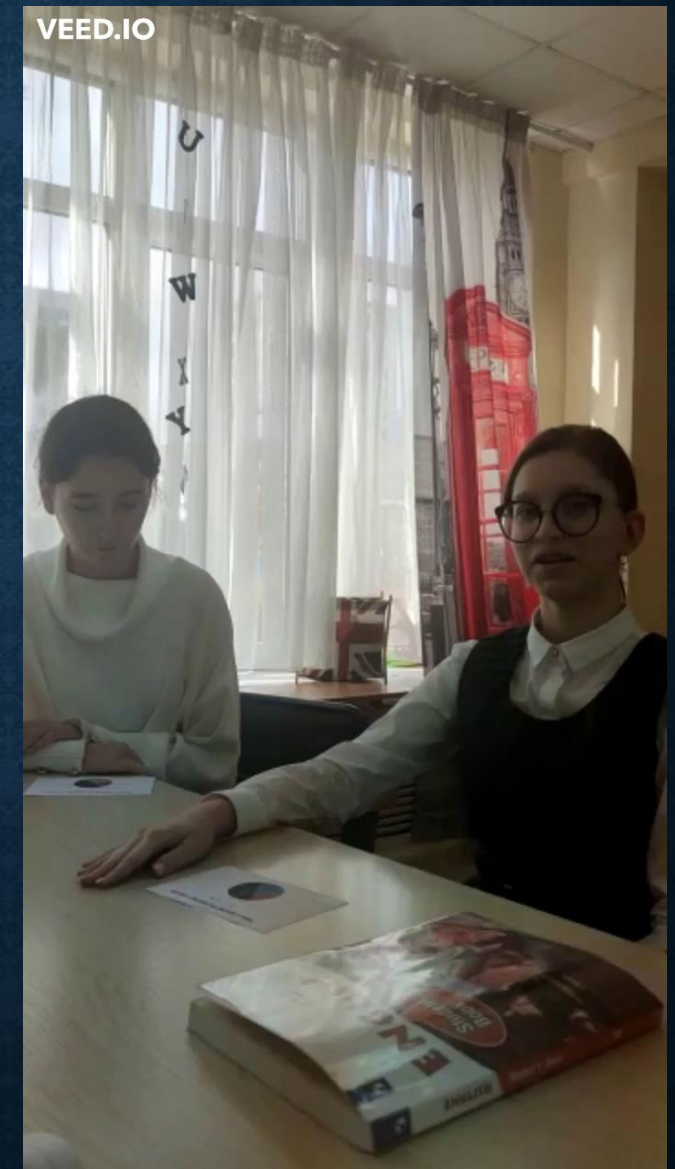




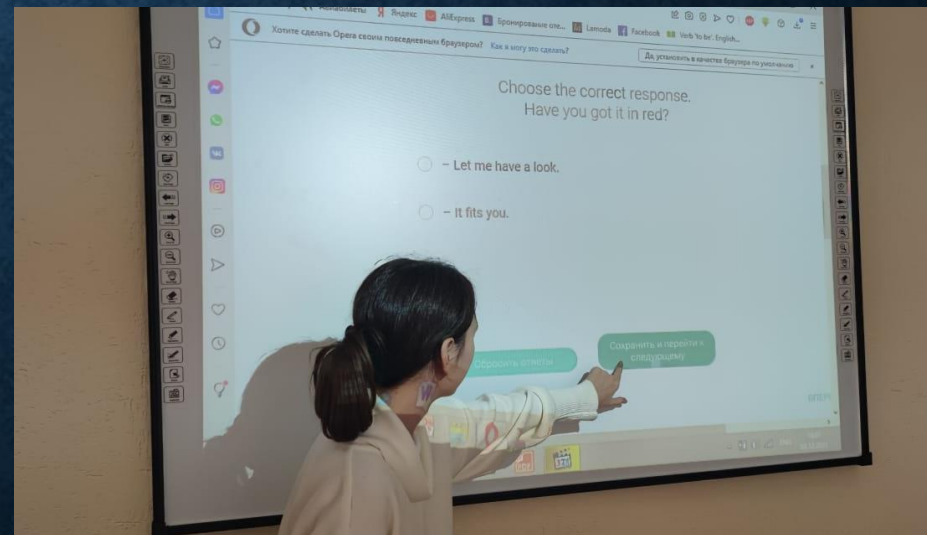
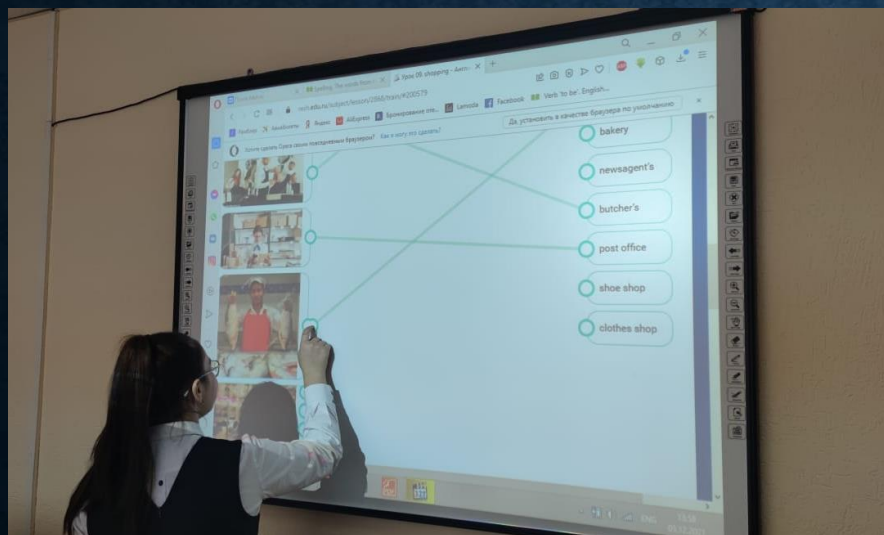
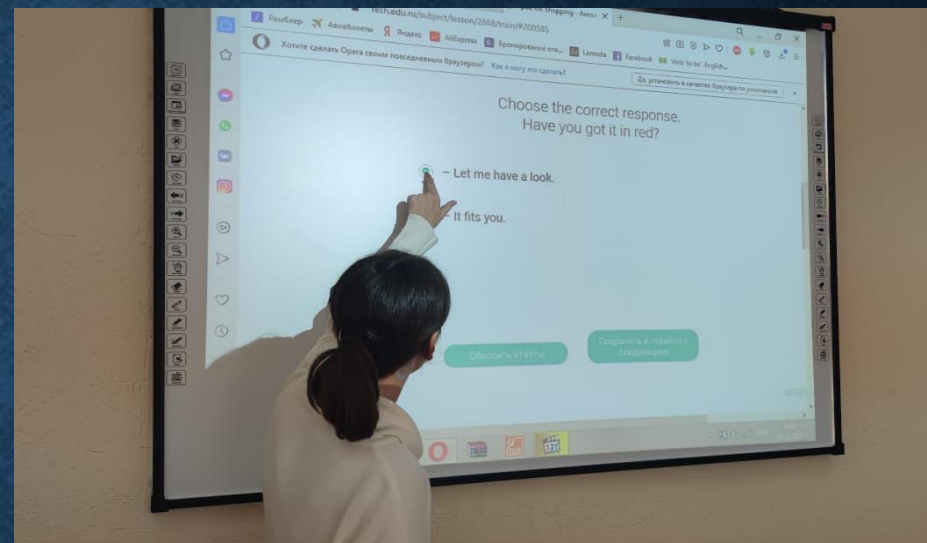
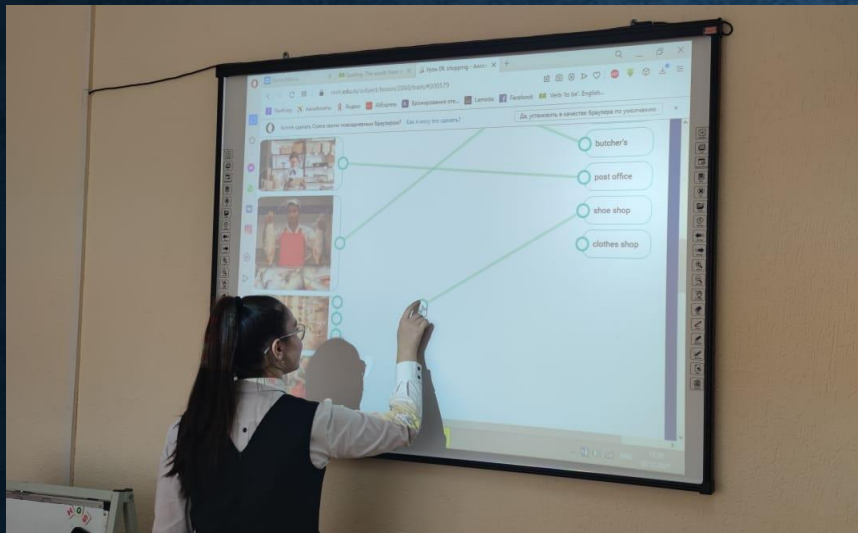
АКТУАЛИЗАЦИЯ ЗНАНИЙ



<https://clideo.com/ru/add-subtitles-to-video>



РАБОТА С ИНТЕРАКТИВНЫМИ УПРАЖНЕНИЯМИ



Карты ВПР Английский яз... Writing task 40: vari... ЕГЭ 2021 анлийск... Творческое объед... Тренажёр по гово...

Главная /

КЛАССЫ

1
КЛАСС

2
КЛАСС

3
КЛАСС

4
КЛАСС

5
КЛАСС





6
КЛАСС

6 класс

Английский язык	Биология	География	Изобразительное искусство
Испанский язык	История	Китайский язык	Литература

Начнём урок Основная часть Тренировочные задания Контрольные задания В1 Контрольные задания В2

Match the pictures with the words.

☐ optician's
 ☐ shoe shop
 ☐ jeweller's
 ☐ bakery
 ☐ clothes shop
 ☐ florist's
 ☐ newsagent's
 ☐ chemist's
 ☐ fishmonger's

1
2
3
4
5
6

<https://resh.edu.ru/subject/lesson/2868/train/#200579>



Education for the job *you want*

If you're looking to get a better job or upgrade your job skills, now's your chance to discover all that Lake Washington Technical College has to offer you.

Choose from 38 specialized programs and more than 100 professional degree and certificate options.

For details about our information sessions and directions to our campus, visit our Web site at www.lwtc.edu/infosession or call (425)739-8300 for more information.

Now enrolling for Fall Quarter

Lake Washington
Technical College

Information Session

Tuesday, September 9

10am to noon

West Building
Welcome Center



**LAKE WASHINGTON
TECHNICAL COLLEGE**

1. What kind of broken text is it?

- a recipe
- a scheme of a scientific research
- an advertisement
- a medical poster

2. Who is the target reader of the text?

- teenagers
- parents and teachers
- disabled people
- elderly people

3. Complete the sentences with a right word:

- a) If you're looking to get a better job, or _____ your job skills, now's your chance to discover all that _____ Washington Technical College has to offer you.
- b) Choose from 38 specialized _____ and more than 100 professional _____ and certificate options.
- c) For details about our information _____ and direction to our campus, _____ our web site.
- d) Information session takes place on _____, on the 9th of _____ from 10 to noon.
- e) The adress of the college is 132nd _____, Kirkland.

4. Make your own poster advertising one of your local college, school

Meet On Higher Ground

Specialty Coffees

	SMALL	MEDIUM	LARGE
Cappuccino	\$3.50	\$4.00	\$4.50
Espresso	\$1.50	\$2.00	\$2.50
Americano	\$2.00	\$2.50	\$3.00
espresso + hot water			
Canadiana	\$2.25	\$2.75	\$3.25
espresso + coffee			
Latte	\$3.50	\$4.00	\$4.50
Mochacino	\$3.75	\$4.25	\$4.75
Chai Latte	\$3.75	\$4.25	\$4.75
Rolo	\$4.50	\$5.00	\$5.50
mocha with caramel			
Caramel Macciato	\$4.50	\$5.00	\$5.50
vanilla latte with caramel			
Espresso Macciato	\$2.50	\$3.00	\$3.50
espresso + foam			
London Fog	\$3.75	\$4.25	\$4.75
earl grey tea, milk, vanilla			

Hot Chocolate or Steamers

Small	\$2.50
Medium	\$3.00
Large	\$3.50
Kids	\$2.00



Travel + Stay Mugs
25¢ Discount

Add: Flavor Shot
Espresso Shot
or
Soy Milk 50¢

Brewed Coffee

Small 12oz	\$2.00	} Refill 50¢
Medium 16oz	\$2.50	
Large 20oz	\$3.00	- Refill \$1.00

Thermos ^{up to 40oz} \$6.00

Cold Drinks

Milk	\$1.50
Snapple	\$2.50
Juice	\$1.75
apple orange	
cranberry	
grapefruit	
Water	\$1.50
Canned Pop.	\$1.25
V8	\$1.50
Hot Tea	\$1.50

CoffeeHouse

1. Where can we see this text?

- in a clothes magazine
- in a cafe
- in a sports complex
- in a History journal

2. What can we know from this article? Read the sentences and write + or - .:

- a) The cafe offers hot and cold drinks.
- b) You can order ordinal and soy milk.
- c) We can order sandwiches in the cafe.
- d) Among cold drinks there is orange juice.
- e) You can pay by credit card and in cash.
- f) Rolo and Caramel Macciato are the most expensive drinks.
- g) There is red tea in the cafe.
- h) The staff in the cafe are only boys.
- i) You can ask to add marshmallow in the coffee.

YOUR LOCAL FITNESS EXPERTS FOR OVER 26 YEARS!

ENJOY OUR
NEW INFRARED
SAUNAS

FOUR SEASONS OF FITNESS

Spring • Summer • Fall • Winter

Buy 6 Months Get 6 Months **FREE**

Plus One

Month **FREE** Tanning!

\$269
+ Tax

Ends 4/30

ADD A FULL
YEAR OF TANNING
FOR \$100

INCLUDES FULL USE OF FITNESS EQUIPMENT,
RACQUETBALL COURT, EXPERT TRAINING &
PROGRAMS AND FULL SHOWER FACILITIES.

Health Plan Reimbursement Programs with the
following providers: BC/BS MN & ND, United
HealthCare, UCare, Medica & Health Partners.

1. Where can we see this text?

- in a popular magazine
- in a hospital
- in an educational centre
- in a scientific journal

2. Read the sentences and write T (true), F (false), NS (not stated):

- a) You can attend the club only in summer and winter. _____
- b) You have a possibility to use sauna. _____
- c) If you pay for 6 months you get a free access to Internet in the club. _____
- d) There is a swimming pool in the club. _____
- e) You can get a consultation about healthy in the club. _____
- f) Club collaborates with famous health centres. _____
- g) You can't go to the club at the weekend. _____
- h) The club has a playroom for children. _____

<https://педпроект.рф/звонкова-т-ю-сборник-заданий/>

РОССИЙСКАЯ ЭЛЕКТРОННАЯ ШКОЛА

The Country of The Queen

Look at these pictures and think what they have in common. These completely different objects and people refer to one country and one strong idea of love, honesty and respect! The United Kingdom of Great Britain and Northern Ireland is a great country with its great history and the great Queen Elisabeth the Second who is both a symbol of the country and a guarantee of its stability!



Reading

Match the questions to the answers.



What is the highest part of the UK?

When is the best time to visit England?

Which British city would you recommend me to visit?

Where is the official residence of the British Queen?

What water object separates the UK from the continent?

Why do men wear kilts on their national holidays in Scotland?

Which city is the capital of England as well as the capital of the UK?

Ben Nevis.

London.

Liverpool as it's small and really nice.

The English Channel.

In summer as it's warm and not too rainy.

Buckingham Palace.

It's their national tradition.