

ПОЧЕМУ ИЗУЧЕНИЕ АНГЛИЙСКОГО ЯЗЫКА  
СЧИТАЕТСЯ ФАНТАСТИЧЕСКИМ  
И ИНТЕЛЛЕКТУАЛЬНЫМ ИСПЫТАНИЕМ?

WHY IS STUDYING ENGLISH A  
FANTASTIC AND  
INTELLECTUAL CHALLENGE?

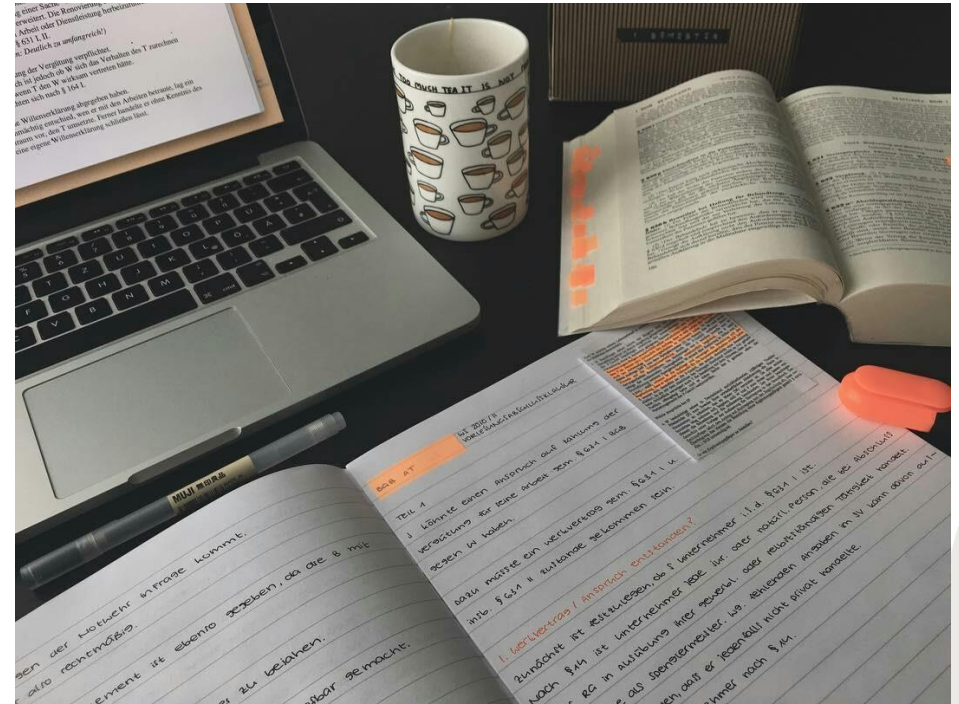
ПРОЕКТ ПОДГОТОВИЛА  
ЛУБКИНА ЕКАТЕРИНА  
УЧАЩАЯСЯ 9А КЛАССА  
МАОУ ГИМНАЗИИ 72



I'M NOT CRAZY  
MY REALITY IS JUST  
DIFFERENT THAN YOURS

IS ENGLISH A  
CRAZY  
LANGUAGE?

high  
lurgical; sa  
~  
**English** n. 1. American  
British; Canadian; Common  
dle; Modern; Old ~ 2. the  
colloquial; idiomatic; the  
standard; pidgin; sub  
1. substandard;



# THE HISTORY OF ENGLISH





goose

+



berry



gooseberry

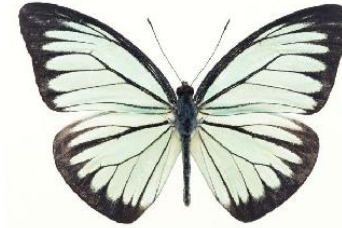


fly

+

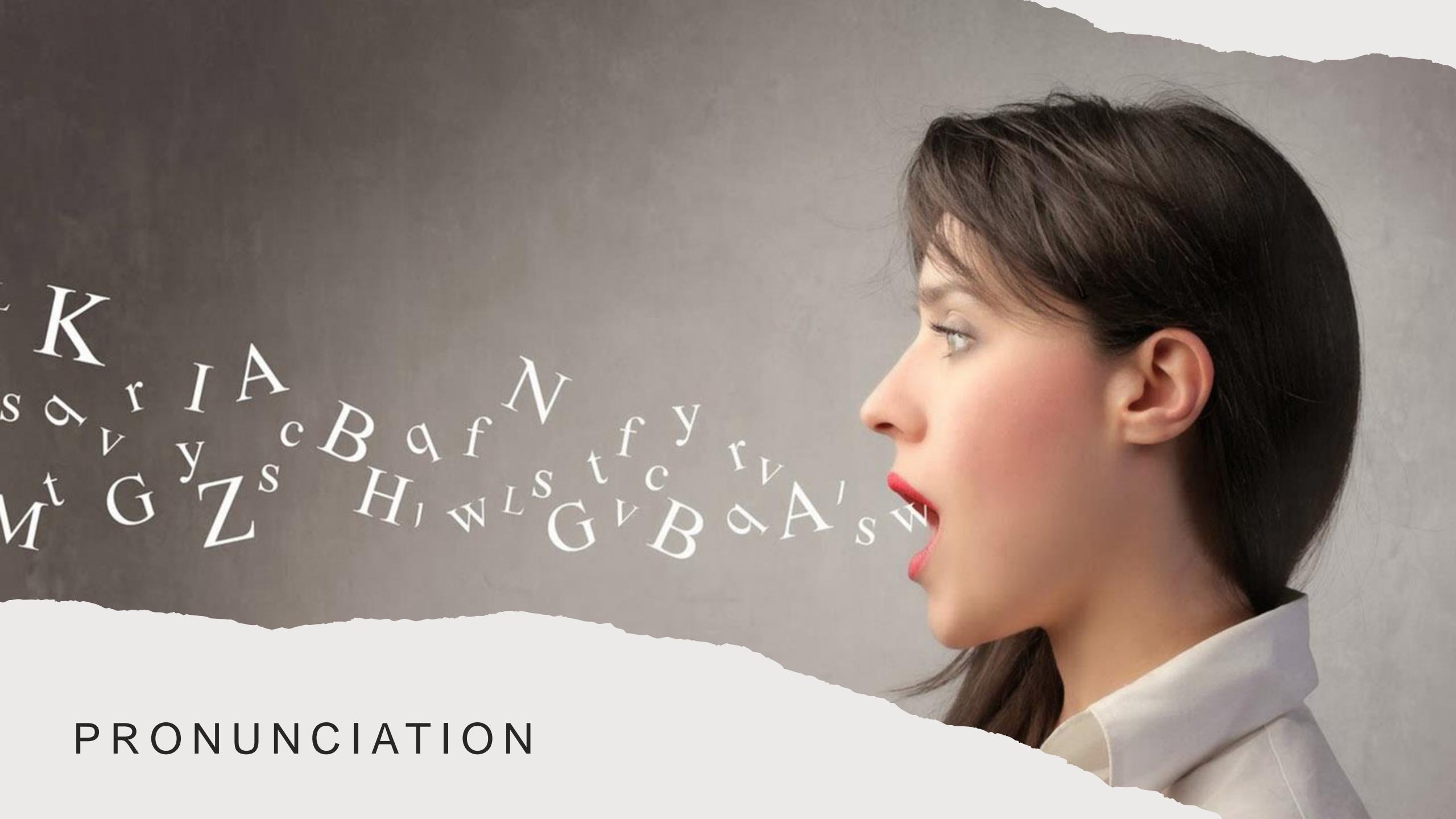


butter



butterfly

# PARADOXES



# PRONUNCIATION

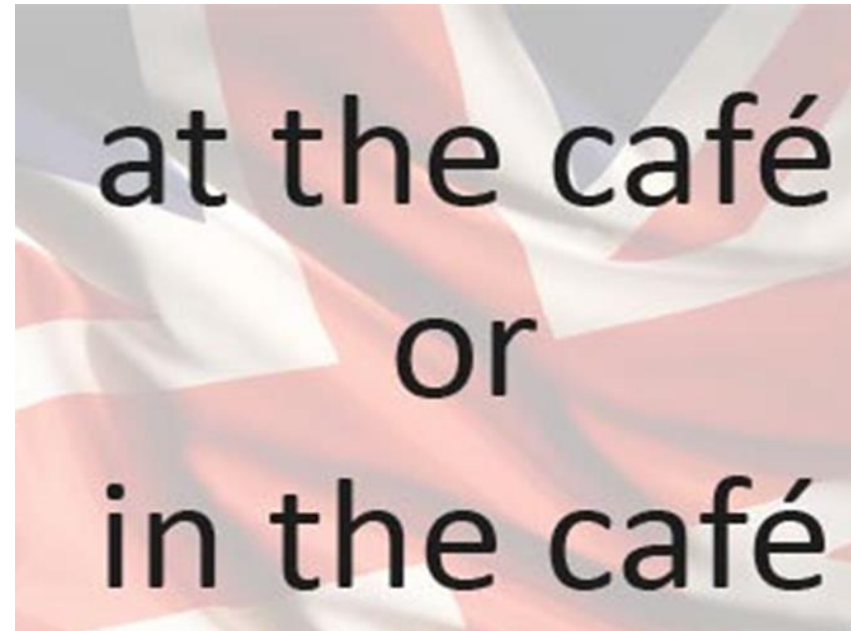
# PREPOSITIONS

Both prepositions mean "in" but there are some differences in the way they are used.

*"In" is used when a subject or a person is somewhere inside. So, the location is of great importance.*

There is a chair in the room.  
*John was in his office.*

*"At" is used when we want to highlight the activities of people at a certain place.*



# PREPOSITIONS

## In

- **in the restaurant;**
- **In school;**
- **In the office;**
- **in the university;**
- **In the café;**
- **in the theatre**

### ***“Inside”***

*if you go for this option, you emphasize the physical space where you are*

## At

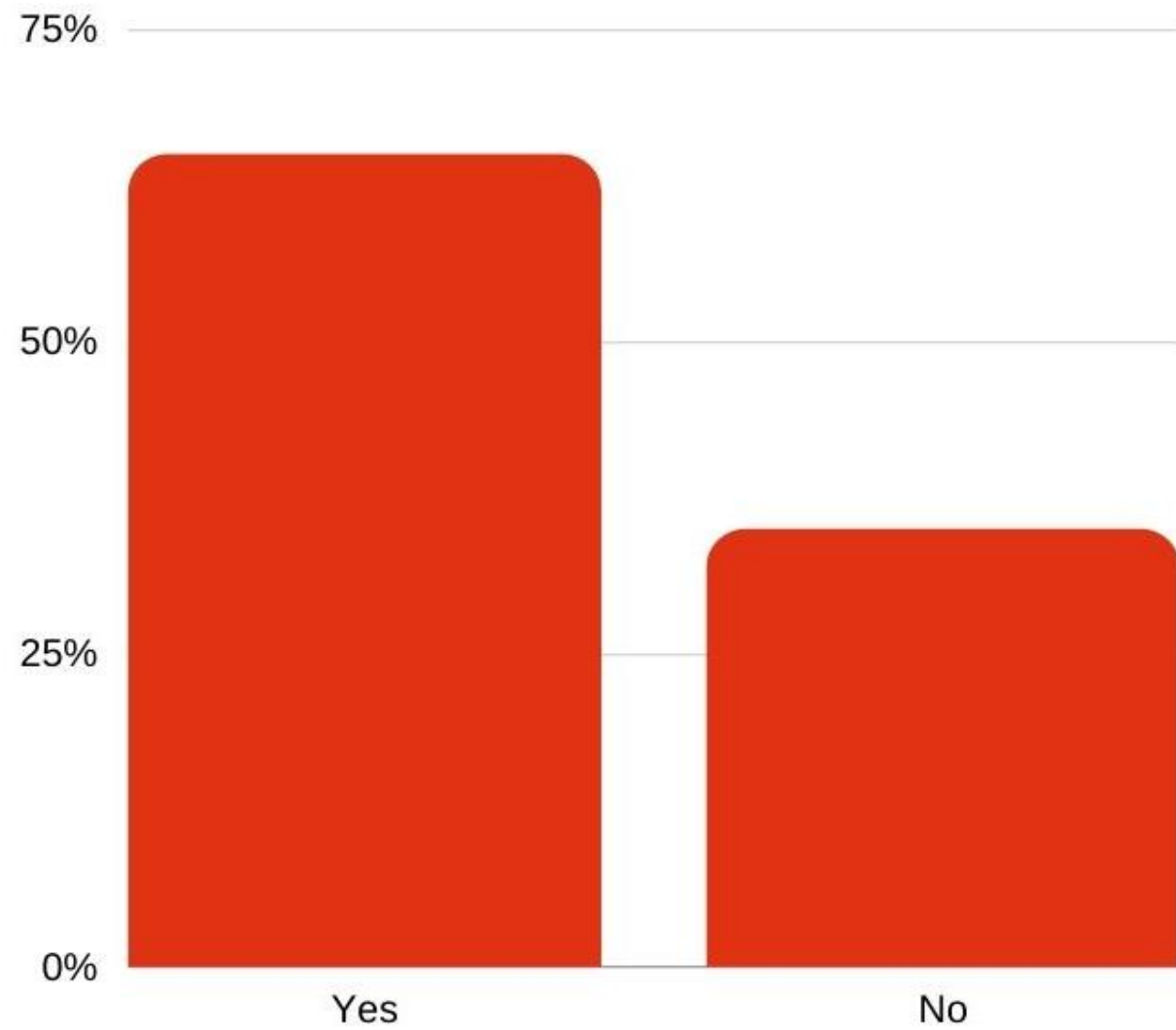
- at the restaurant;
- at school;
- at the office;
- at university;
- at home;
- at the café;
- at the theatre

### ***“At”***

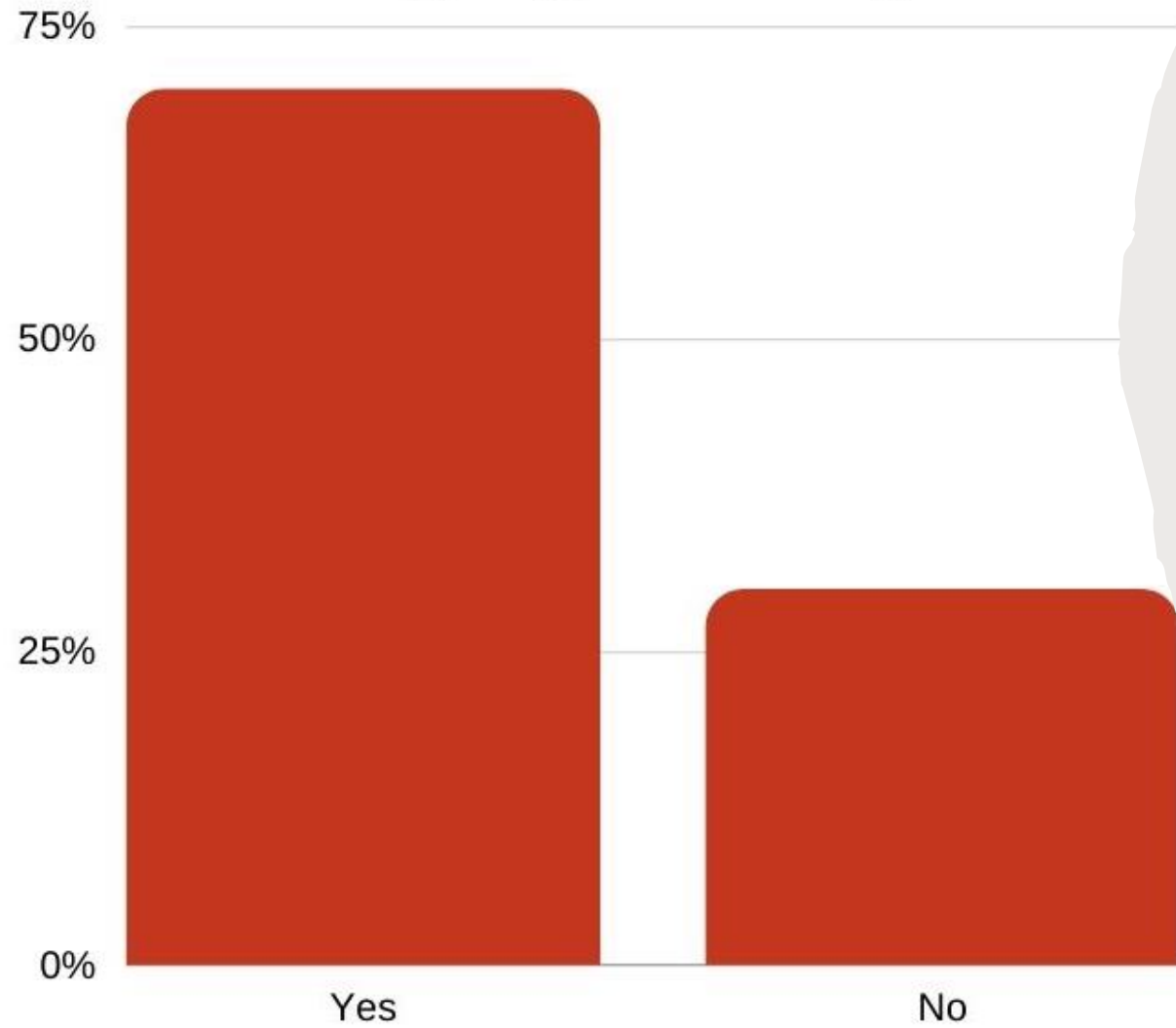
*you want to stress what you are doing*



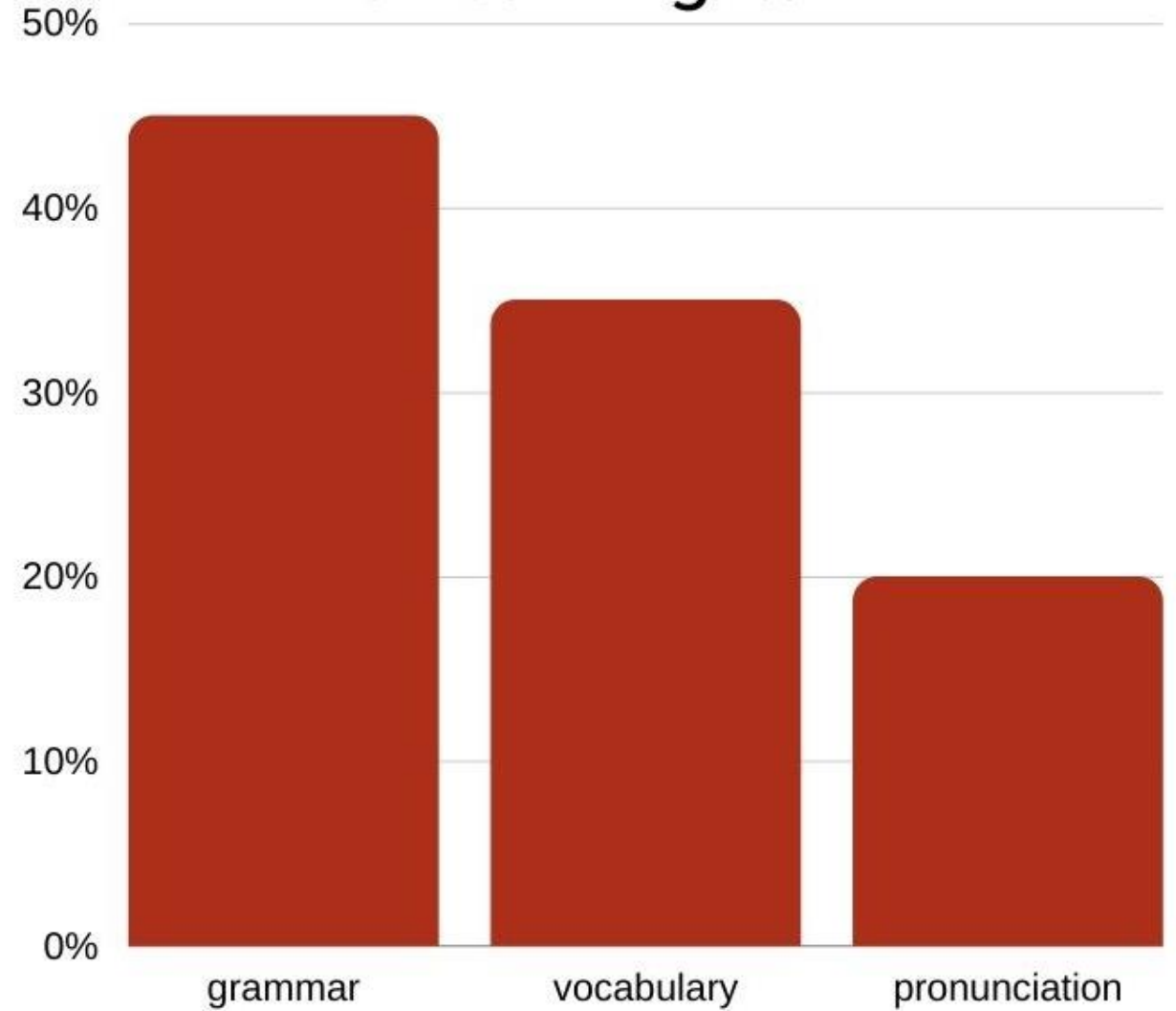
## Do you enjoy learning English?



# Do you find English a difficult language to study?



# What is the most difficult aspect of English in the process of learning it?





"PRACTICE MAKES PERFECT"

